

# Wireless Printing in the Boston College Libraries

## Using Windows | Using Mac OS X

### Using Windows

To add a Library print queue using Windows:

1. Log in to your computer as an Administrator.
2. Optional: [Join the BC domain](#).

Note: If you join the BC domain, then you only need to follow these set up instructions once. If you do not join the BC domain and you restart your computer, you will need to repeat Steps 1-7 to print in O'Neill.

#### Windows 2000/XP

3. Click **Start**, then click **Run**.
4. Do the following (see *Figure 1a*):
  - In the **Open** box, type: **\\pharos-ps2**.
  - Click **OK**.

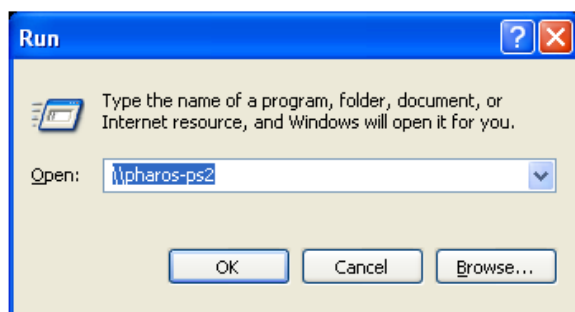


Figure 1a.

#### Windows Vista or 7

3. Click **Start**
4. In the search bar, type (see *Figure 1b*): **\\pharos-ps2**

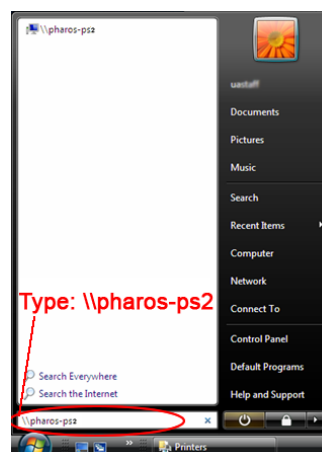


Figure 1b

5. If you have not joined the BC domain, you are prompted to enter your username and password (see *Figure 2*):
  - In the User name box, type (substituting your BC username in place of "username"): **bc\\username**.
  - In the Password box, enter your **BC password**.



Figure 2.

6. Right-click your desired library: **BapstLibrary**, **ERC**, **ONEiLLibrary**, **SWLibrary**, or **TML** and from the drop-down list, click **Connect** (see *Figure 3*).

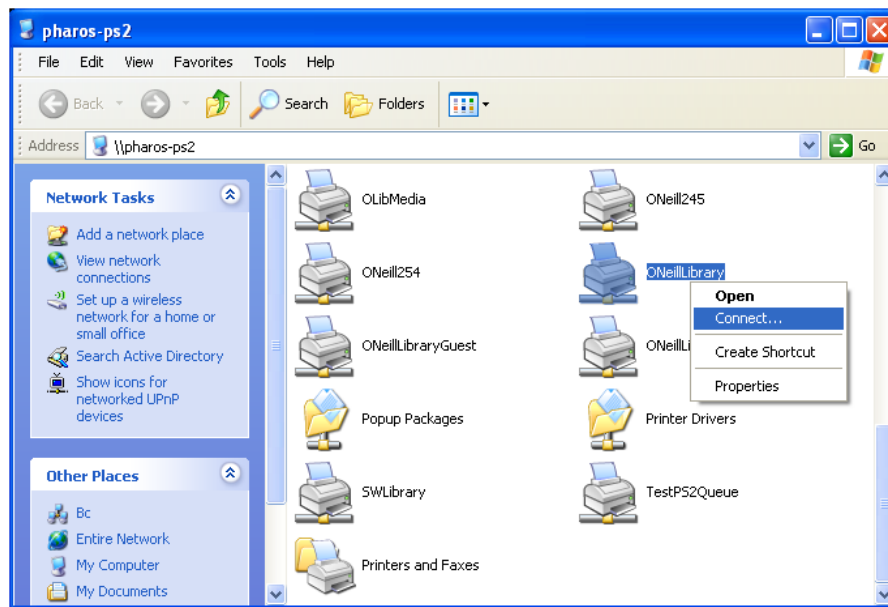


Figure 3.

7. If prompted to install any necessary software, click **OK**.
8. In order to print to the Libraries, you must select **\\pharos-ps2\\<library\_printer\_name\*>** (see *Figure 4*).
- \*Library printer names are: BapstLibrary, ERC, ONEiLLibrary, SWLibrary, or TML

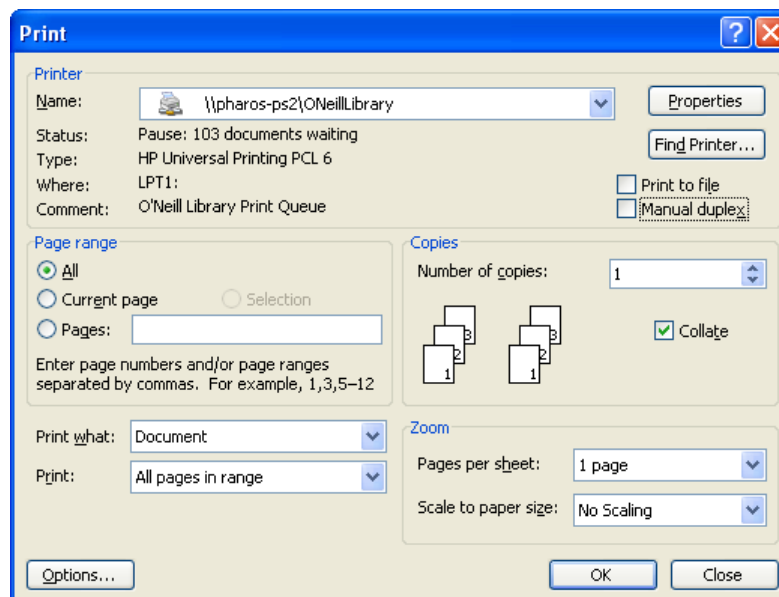



Figure 4.

Your print job will remain in the queue for 24 hours.

## Using Mac OS X

To set up to print to the Library printers using Macintosh OS X (Jaguar):

1. Log in to your computer as an Administrator.
2. Make sure you are [connected to BC's network](#)
3. Open Internet Browser and go to: [www.bc.edu/software/applications/print.html](http://www.bc.edu/software/applications/print.html)
4. Under **Pharos Print Management Pop-Up Client 6.0** and click the Mac icon:   
Note: If you use Internet Explorer, press the <Option> key while clicking the Mac icon.  
- OR -  
Open Internet Browser and [download Pharos Print Management Pop-Up Client 6.0 now](#) (File size: 251 KB).
5. When prompted, enter your BC username and password.
6. Double-click the **Popup.dmg** icon to begin installation, and then double-click **Popup.pkg**.
7. Click **Continue** (refer to Figure 1).

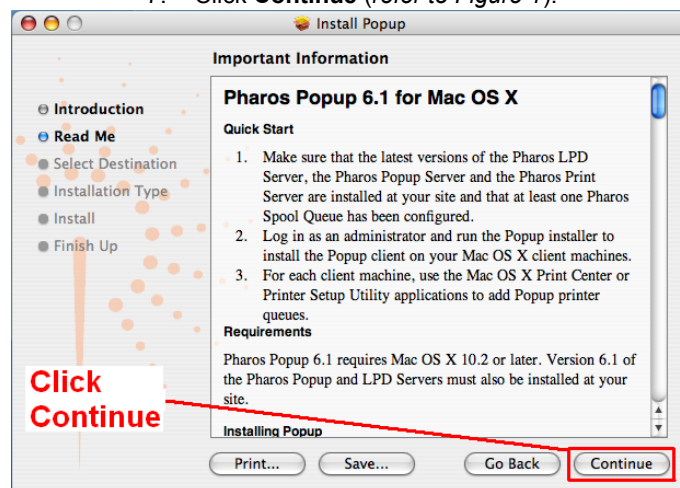


Figure 1.

8. Do the following (refer to Figure 2):
  - Click **Macintosh HD**.
  - Click **Continue**

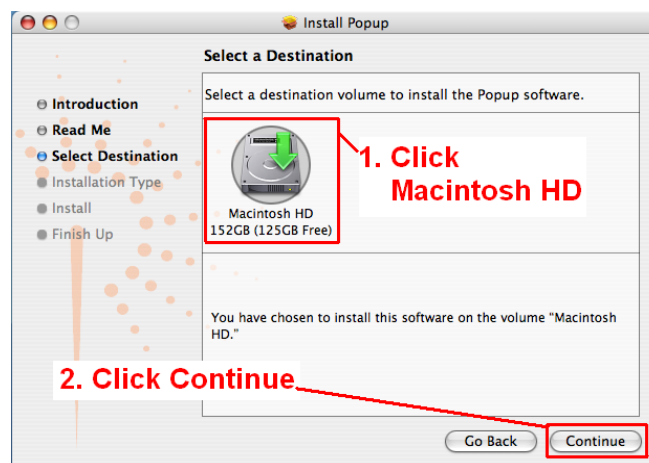


Figure 2.

9. Click **Install**.

10. Enter the following (*refer to Figure 3*):
  - In the Server Address box, type: **pharos-ps2.bc.edu**.
  - Do not change the Server Port or Server Timeout(s).
  - Click **Continue**.

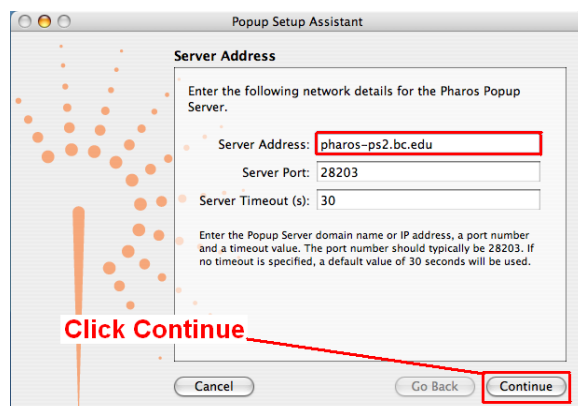


Figure 3.

11. Leave the Client Port as the default. Click **Continue** (*refer to Figure 4*).

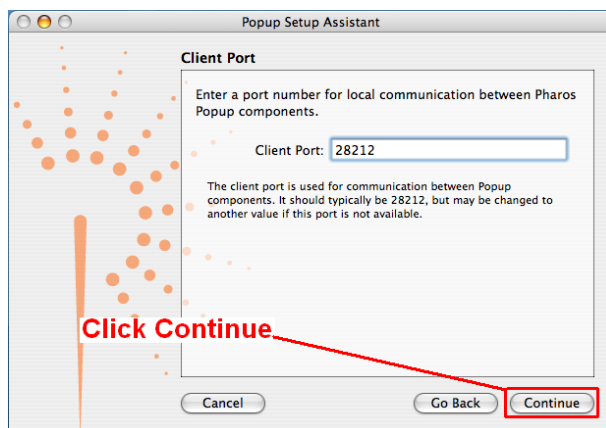


Figure 4.

12. Click **Continue**.
13. Click **Done**.
14. The Pharos Popup Client installation is complete. Click **Close** (*refer to Figure 5*).

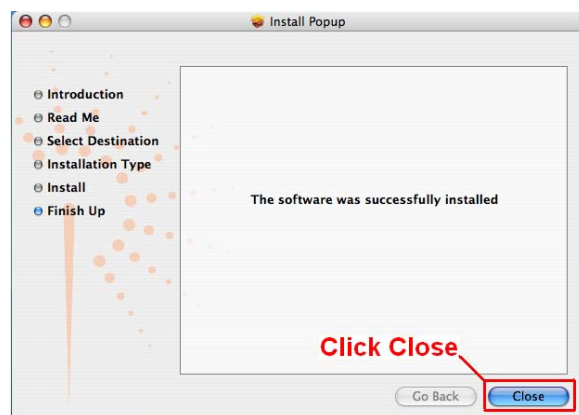


Figure 5.

15. You can now delete the **Popup 6.1** and **Popup.dmg** files from your desktop.



16. Open the Print Center **Print Center** , which is located on your Macintosh Hard Drive/Applications/Utilities/Print Center.

17. On the Printer List, click **Add** (refer to Figure 6).

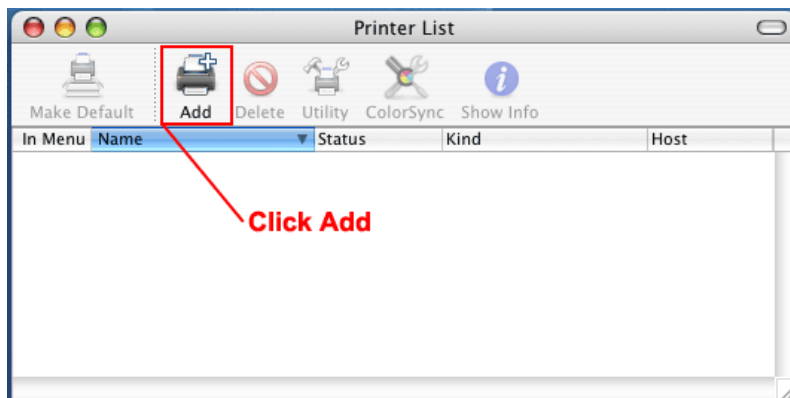


Figure 6.

18. Press the **<Option>** key and click **More Printers** (refer to Figure 7).

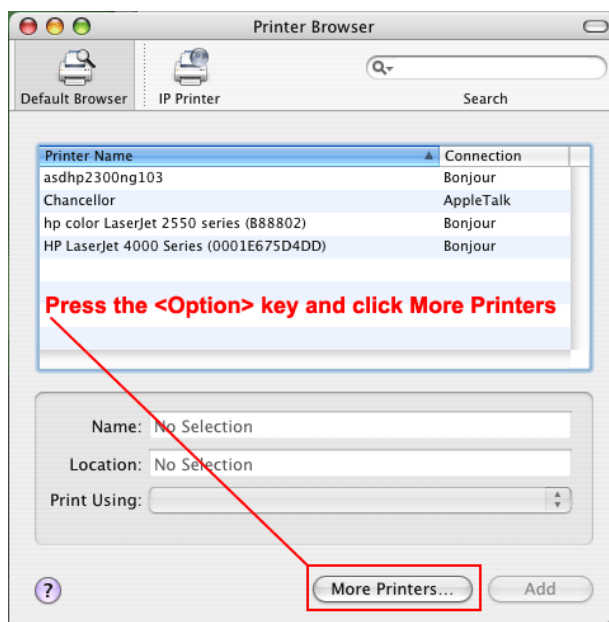


Figure 7.

19. Do the following (refer to Figure 8):

- From the drop-down list, select **Advanced**.
- From the **Device** drop-down list, select **Pharos Print Server**.
- In the **Device Name** box, type: **LibraryPrinter**
- In the **Device URL** box, type: **popup://pharos-ps2.bc.edu/<library\_printer\_name\*>**

\*Library printer names are: BapstLibrary, ERC, ONeillLibrary, SWLibrary, or TML

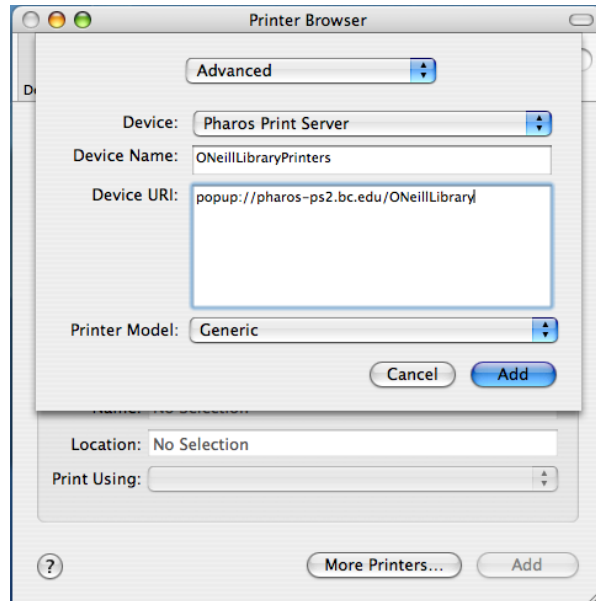


Figure 8.

20. Do the following (refer to Figure 9):

- From the **Printer Model** drop-down list, select **HP**.
  - From the **Name** box, select **HP LaserJet 9040**. (ERC use: HP LaserJet P4014dtn)
- Important: Do not install generic drivers - they will crash the Print Server.**
- Click **Add**.

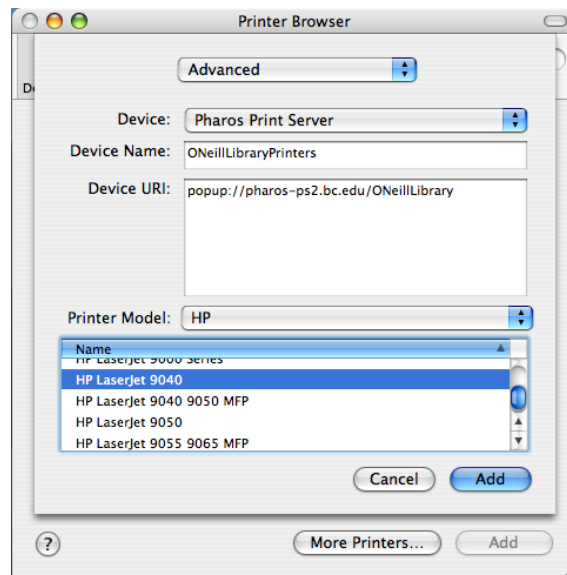


Figure 9.

The Printer List now has **LibraryPrinter** in it (refer to Figure 10).

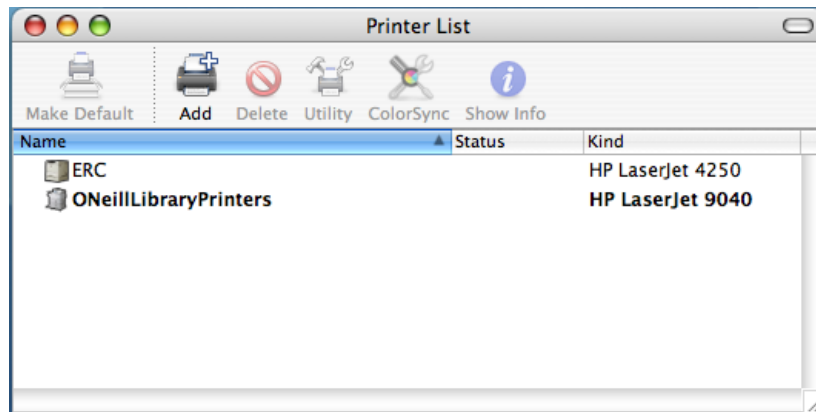


Figure 10.

21. To print documents using a printer shortcut on your desktop, do the following:

- To create a desktop shortcut to this printer: From the Printer List, drag the printer to your desktop.
- To print to that printer: Drag documents to the printer shortcut on your desktop.